

Concord International Securities Co., Ltd. Investor Conference

Stock Code : 5864
<https://www.wintan.com.tw>

Report date : June 16,2026

Disclaimer

- The content of this presentation has not been proofread or reviewed by accountants or independent experts. The Company tries its best to ensure the accuracy and completeness of the presentation content but does not guarantee that all information is correct.
- This presentation may contain forward-looking statements but is not limited to all statements of the Company's business activities, events or developments that may occur in the future. These statements are based on the Company's assumptions about future operations and various political, economic, market and other factors beyond the Company's control, so the actual operating results may differ significantly from these statements.
- After the briefing is made public, the Company shall not be obliged to revise or update its content immediately.
- The content of this briefing shall not be regarded as an offer or inducement to buy or sell securities or other financial commodities.



CONTENTS

01

Company Profile

02

Operation Results

03

Operational outlook

01

PART ONE

Company Profile

1.1 Company Profile

Date of establishment

November 1989

Paid-in capital

NT\$4,544 billion as of
May 2026.



Number of employees

211 people as of May 2026

Main services

Brokerage, Dealer Underwriter, bonds
Futures Trading Assistance, Securities
trading financing (securities) business,
Borrowing or Lending Money in connection
with Securities Business by Securities Firms

Locations in Taiwan

9 locations

1.2 Milestones of the Company



- ▲ November 1989 -The Company started its business, with a paid-in capital of NT\$1.4 billion, and its business items included brokerage, dealers and underwriting business of securities.
- ▲ February 1995 -The first branch was established (Taipei Branch).
- ▲ June 1999 -The e-securities department was established.
- ▲ November 2007 -Merged with Sun Rise Securities Co. Ltd.
- ▲ April 2009 -The Company officially listed in the emerging stock market.
- ▲ August 2010 -Internet order AP System Just Win was officially launched.
- ▲ April 2015 -Securities Trading Margin Purchase and Short Sale Operations by the Company.
- ▲ April 2018 -The Company officially registered in the over-the-counter market.
- ▲ September 2025 -The Company's paid-in capital increased to NT\$4.544 billion.

1.3 Branch office locations

Tainan Head Office (established in November 1989)

Head office



No. 10, Ximen 3rd Road, Tainan City
(06)221-9777



1.3 Branch office locations

Tainan business locations: 4 (Jiali branch office was established in April 1996. Fuchien branch office was established in October 1996. Jinhua branch office was established in January 1997, Chongde branch office was established in November 1997.)

Jiali branch



3F., No. 351, Yenping Road, Jiali Dist.,
Tainan

(06)722-6666

Fuchien branch



No. 141, Fuchien Road, Section 1,
Tainan

(06)213-5888

Jinhua branch



B1, No. 172, Jinhua Road, Section 2,
Tainan

(06)261-9777

Chongde branch



No.242, Hua Dong Road, Section 3,
Tainan

(06)289-9000

1.3 Branch office locations

Branch office locations in Taipei: 3 branches (Taipei Branch Office was established in Feb. 1995. Dongmen Branch Office was established in April 1997, and Nanjing Branch Office was established in September 1998.)

Taipei Branch



2/F, 96 Xinyi Road, Section 4, Taipei
(02)2700-6666

Dongmen Branch



2/F, 213 Xin Yi Road, Section 2, Taipei
(02)2351-6600

Nanking branch



4/F, 188 East Nanjing Road,
Section 5, Taipei
(02)2748-5558

1.3 Branch office locations

Kaohsiung Office: 1 (established in July 1997).

Kaohsiung Branch



No. 83, Kwang Hua 1st Road, Kaoshiung

(07)225-9255

1.4 Major Core Business

Securities business loan payment characteristics

Solve the use of stock assets on the account of customers due to temporary shortage of funds. Using inventory stocks as collateral, it is more mobile than credit loans.



Brokerage business characteristics

The Company currently has nine brokerage business locations in Taiwan and adopts a full range of localized services. With the spirit of local people serving local customers and kindly and familiarly cut into the service of customers in many fields.



Credit transaction (financing, securities lending) business features

Provide customers with more flexible and short-term investment tools, active funds and securities sources.



Business characteristics of underwriting department

With the goal of providing professional financial services to businesses to act as a good intermediary and supplier in the market value chain and to enhance operational value.



Business characteristics of self-employed and bond departments

The team obtains various data and observes market volatility information through computer assistance to determine the trend the stock market in order to achieve the department's growth goals.



02

PART TWO

Operation Results

2.1 Condensed Balance Sheet

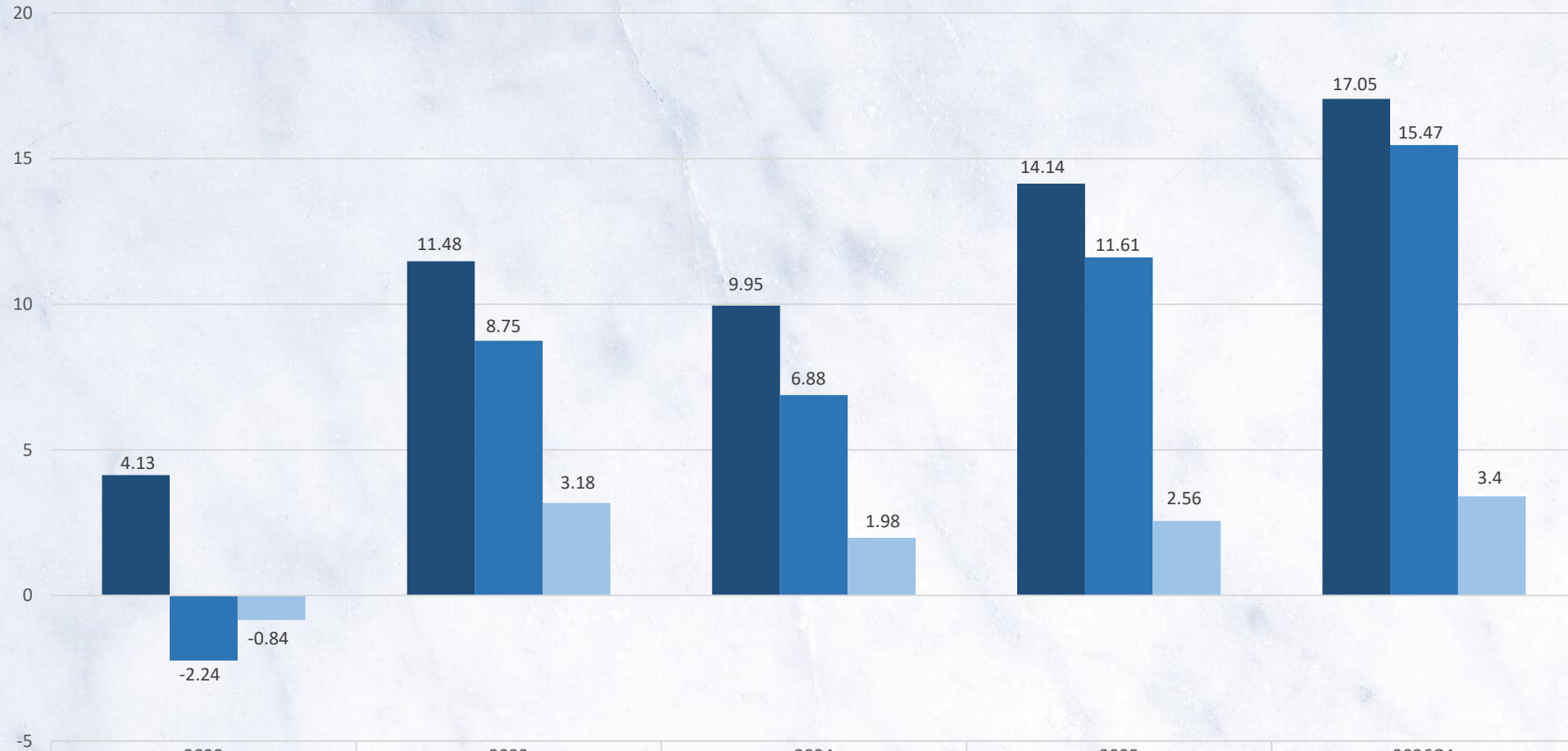
Item	2024	2025	2026Q1
Current Assets	7,187,104	10,868,791	13,183,408
Non-Current Assets	1,559,565	1,588,199	1,643,162
Total Assets	8,746,669	12,456,990	14,826,570
Current Liabilities	1,470,826	4,242,725	5,036,159
Non-current Liabilities	39,259	50,109	39,304
Total Liabilities	1,510,085	4,292,834	5,075,463
Capital	4,208,292	4,544,956	4,544,956
Total capital surplus	517,077	517,077	517,077
Retained Earnings	2,350,257	2,993,176	4,540,323
Other Equalities	160,958	108,947	148,751
Total Equalities	7,236,584	8,164,156	9,751,107
EPS (NT\$)	17.2	17.96	21.45

2.2 Condensed Income Statement

Item	2024	2025	2026Q1
Total Income	995,252	1,414,894	1,705,117
Expenditures and fees	(334,304)	(295,068)	(116,725)
Operation income	660,948	1,119,826	1,588,392
Non operation (loss) income	54,637	58,431	14,316
Net (loss) Income before tax	715,585	1,178,257	1,602,708
Taxes (income)	(27,361)	(16,379)	(55,386)
Profit (loss) from continuing operations	688,224	1,161,878	1,547,322
Net income (loss)	688,224	1,161,878	1,547,322
Other consolidated income (loss) (net)	(96,128)	(65,974)	39,629
Total consolidated income (loss)	592,096	1,095,904	1,586,951
EPS	1.98	2.56	3.40

2.3 Operation Results

Revenue and profit performance in the past five year



	2022	2023	2024	2025	2026Q1
Revenue	4.13	11.48	9.95	14.14	17.05
Netincome	-2.24	8.75	6.88	11.61	15.47
EPS	-0.84	3.18	1.98	2.56	3.4

2.4 Operation Results

As of the end of May 2026, the transaction amount was NT\$ 4,959.10 million .

Revenues

Underwriting business

As of May 2026, totaled 1 co-sponsored underwriting cases.

NT\$36.88 million yuan as of the end of May 2026.

Financing and Financing Credit Trading

Dealer Division

The figure for May 2026 was NT\$ 12.96 million yuan.
NT\$46.63 million yuan as of the end of May 2026.

2.5 Sustainability Philosophy-Employee Benefits

Basic Benefits	Bonus/Subsidies	Leave	Retirement and Insurance
<ul style="list-style-type: none"> ● Labor and National ● Health Insurance. ● Fidelity Insurance. ● Group Accident Insurance. ● Education and Training. ● Health Examinations. ● Employee Travel Programs. ● Year-End Banquet and Spring Gathering Events. 	<ul style="list-style-type: none"> ● Holiday Bonuses. ● Performance Bonuses. ● Employee Bonuses. ● Year-End Bonuses. ● Birthday Gift Allowance. ● Wedding, Funeral, and Celebration Subsidies. ● Maternity Allowance 	<ul style="list-style-type: none"> ● Special leave. ● Maternity leave. ● Parental leave. ● Paternity leave. ● Vaccination leave. ● Quarantine leave. ● Pandemic prevention and care leave. 	<ul style="list-style-type: none"> ● Labor pension To protect staff's rights and interests after retirement, Labor base law and retirement Provisions of the ordinance. ● Employee Stock Ownership Trust The company also allocates the monthly contributions of the participating employees.



Regular Employee outing activities and Chinese New Year Celebration Party

2.5 Sustainable Business Philosophy- Implementation of Corporate Social Responsibility

Industry-university Exchange

Since 2019, the Company has successively cooperated with the departments of finance and economics of neighboring universities to build and teach. In addition to participating in school recruitment activities, it also provides students with internship opportunities. The Company signed an off-campus internship contract with Tainan University of Applied Science and Technology for students, so that students can improve their professional abilities through practical learning, and they can also better understand the work content of the securities industry. It is hoped that it will provide reference and help for students' future career choices. After the internship, the Company will hire outstanding students as full-time employees.

Society Caring

Caring Club Donates Blood for caring Participate in sponsoring the blood donation event organized by the Gudu Caring Society every year. Donate a bag of blood, save a life, call on employees to respond together with blood and sleeves, to give back to the community with practical actions, and also encourage employees to turn their blood into a hearty caring, to convey to those in need.



2.6.1 Promoting Sustainable Development to Save Energy and Reduce Carbon use

- ◆ Office energy-saving and carbon reduction policies.
- ◆ Energy-saving fluorescent lamps are used in the office to progressively replace T5 or LED lamps for energy-saving and carbon reduction.
- ◆ Changed the temperature setting of office air-conditioners and posted slogans on the company's bulletin board to remind employees to turn off the electricity whenever possible.
- ◆ Office air conditioners are usually set to 26~28 degrees Celsius.
- ◆ Regular replacement of water dispenser consumables and water quality tests to assure the quality of drinking water and the health of the employees.
- ◆ Implemented the measure of elevators not stopping at the lower floors, so as to promote and encourage employees to use the stairs rather than the elevator at lower floors.
- ◆ Replace the CRT TV wall.



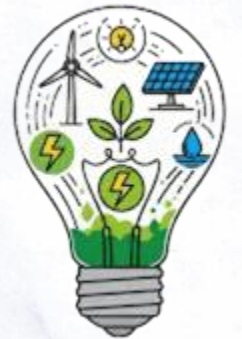
2.6.2 Promoting Sustainable Development to Save Energy and Reduce Carbon use

- ◆ Switch to energy-saving LCD TV wall.
- ◆ Escape route indicators on each floor have been changed to energy-saving LCD displays.
- ◆ Turn off the lights and air conditioners whenever possible. Turn off the lights and air-conditioning in meeting rooms and restrooms when done, and make sure that computers and other electrical equipment are turned off before leaving work. During consecutive holidays, turn off the power of electrical appliances or equipment to minimize the waste of energy caused by standby.
- ◆ Fire protection and heat shielding works for the rooftop, with additional heat shelter and heat shielding paint on the rooftop.
- ◆ Green procurement. All renovations were done with building materials and equipment with Green marks, and electrical appliances were procured in accordance with the government's energy-saving policy.



2.6.3 TCFD Climate-related Risks and Opportunities

In response to the impacts and risks of climate change, the Company reviews relevant issues at any time and makes appropriate adjustments to its risk management policies to cope with short-, medium-, and long-term risk changes. The related operations are promoted by the Sustainability Committee at the operating level, which is divided into teams, and the Chairman is responsible for supervising and reviewing the committee's promotion plans and implementation on a regular basis, as well as coordinating the promotion of the Company's various sustainable development matters, such as the various goals of corporate social responsibility, energy-savings & carbon reduction, information security & protection, and the response to climate change, and to draw up relevant management policies and specific promotional plans accordingly.



03

PART THREE

Operational outlook

3.1 Operational Outlook and Economic Data

Economic Growth Rate

- An annual growth of 1.12 % in 2023.**
- An annual growth of 4.59 % in 2024.**
- An annual growth of 3.10 % in 2025.**
- The economic growth rate in 2026 is expected to be 2.8%**



Per Capita GNP

- Approximately US\$32,319 in 2023.**
- Approximately US\$33,983 in 2024.**
- Approximately US\$35,106 in 2025.**
- Estimated price is approximately US\$36,500 in 2026.**

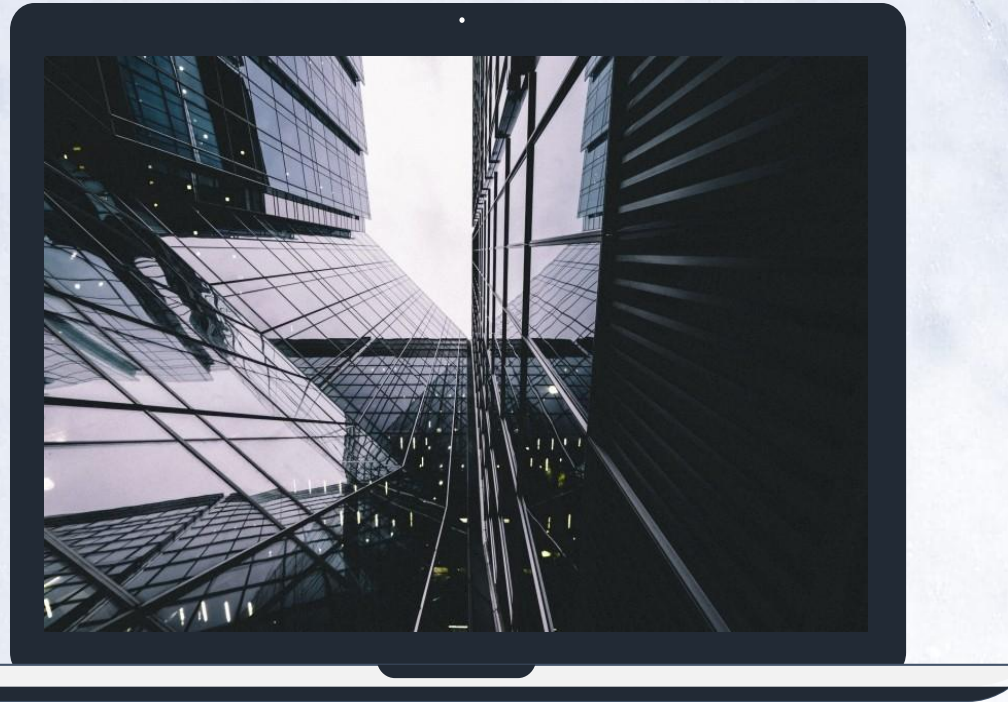
3.2 Global Economic Trends and Outlook

According to the National Development Council's latest Business Indicators released in 2026, the overall economy has maintained a stable growth trend. Benefiting from the expansion of AI applications, high-performance computing, and export demand, export performance has continued to recover. However, uncertainties remain regarding global inflation trends, monetary policies of major economies, and geopolitical risks, and continued attention should be paid to the impact of international market developments on the overall economy.

Chung-Hua Institution for
Economic Research

As of the first quarter of 2026, the Federal Reserve has maintained a cautious approach to its interest rate policy, and the market expects future policy adjustments to remain dependent on inflation and employment data. Economic growth in the United States has moderated, while the pace of recovery in Europe and Mainland China continues to vary. Volatility in global financial markets and geopolitical risks continue to affect international capital market performance, and investors should remain attentive to changes in the global economic environment.

3.2 Global Economic Trends and Outlook



Slower Global Growth, Supported by AI Demand

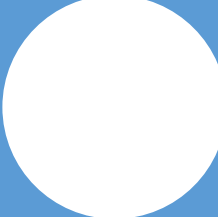
In 2026, the global economy maintained moderate growth as inflation eased and monetary policies stabilized. AI-driven demand for semiconductors, data centers, and cloud computing continued to support economic growth, although the global recovery remained uneven.

Strong Tech Exports, Steady Domestic Recovery

Driven by growing demand for AI servers, high-performance computing, and semiconductors, Taiwan's exports continued to expand, with the technology sector remaining a key driver of economic growth. Meanwhile, sustained corporate investment, wage growth, and recovering consumer spending contributed to a gradual improvement in domestic demand.


3.2 Global Economic Trends and Outlook

Energy and Geopolitical Volatility Increase Market Risks

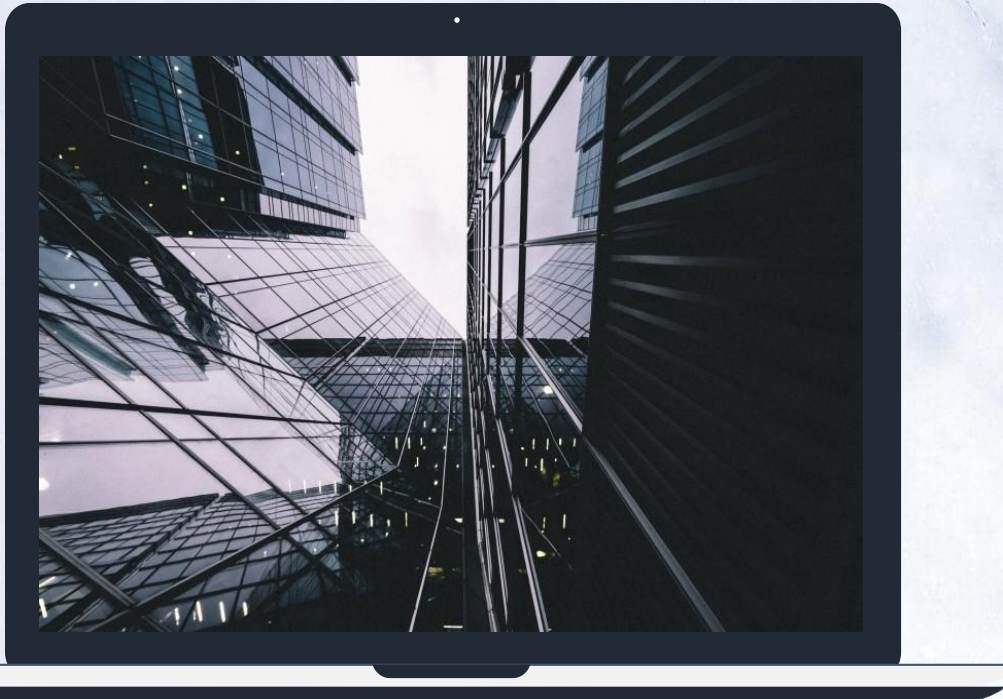


Geopolitical tensions, including developments in the Middle East, U.S.-China technology competition, and global supply chain restructuring, continue to increase market uncertainty. Fluctuations in energy prices may raise corporate costs and inflationary pressures while affecting financial market stability. As Taiwan is a highly export-oriented economy, external risks remain an important area to monitor.

Global Recovery Continues Amid Ongoing External Challenges



In 2026, the global economy continued to recover at a slower pace. AI and technological innovation remained key growth drivers, while geopolitical and market uncertainties continued to affect the global investment environment.



3.3 The Company's Future Outlook



Optimize online account opening, enhance the segregated account trading system, and improve customer fund utilization efficiency.

Enhance employee training to improve service quality and professional expertise, provide timely support for clients, and strengthen service value.



Continue strengthening overall cybersecurity protection capabilities.



Actively promote sustainability policies and implement sustainable development goals.



THANK YOU!

**Concord International
Securities Co., Ltd.**

Stock Code: 5864

<https://www.wintan.com.tw>